



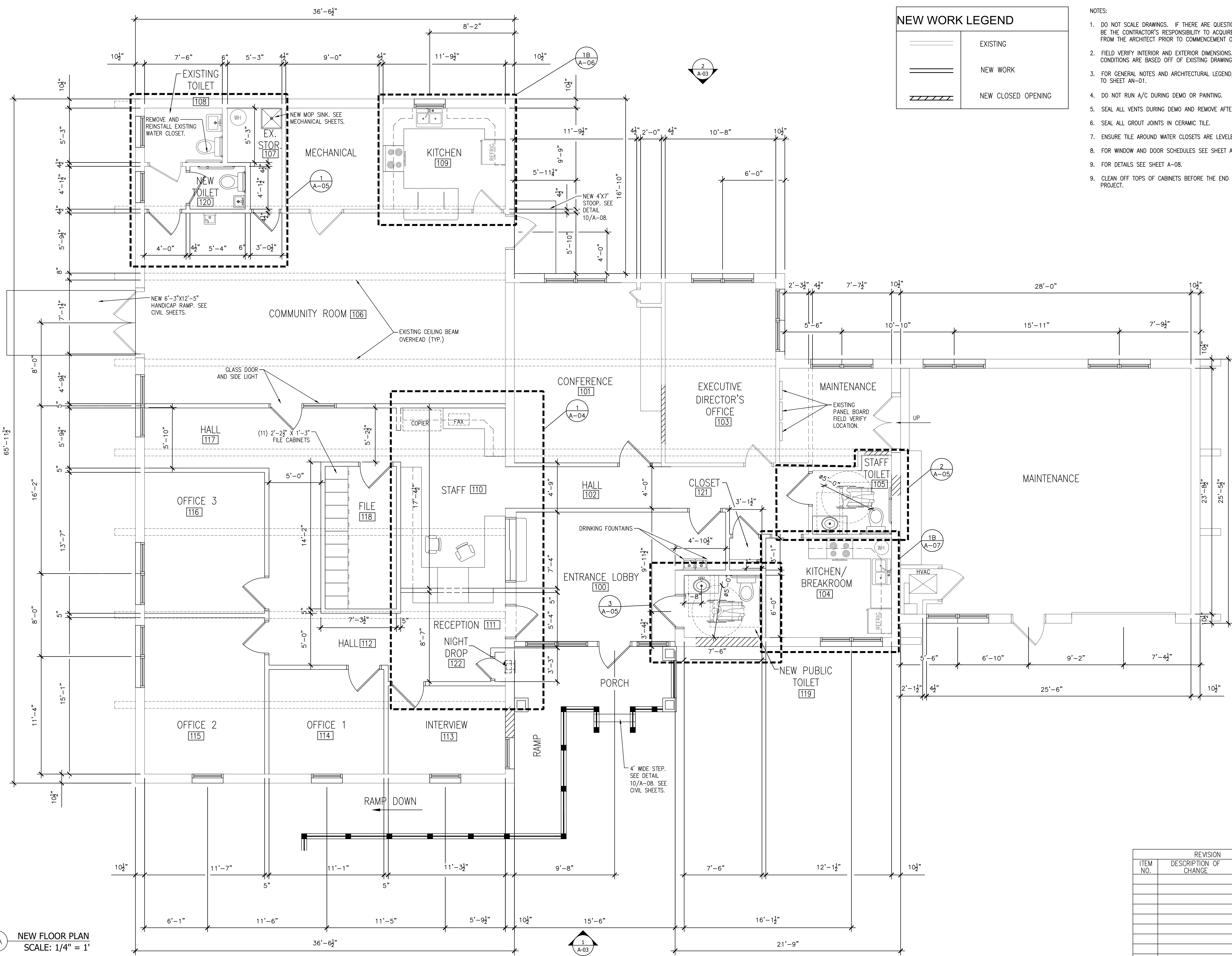
5567 Commander Dr., Ste 105
 Arlington, Tennessee 38002
 Phone: 901-867-5220
 Fax: 901-867-5331
 E-Mail: ledford@ledfordep.com

FLOOR PLAN
MAIN OFFICE BUILDING RENOVATION
RIPLEY HOUSING AUTHORITY
RIPLEY, TN

NEW WORK LEGEND

	EXISTING
	NEW WORK
	NEW CLOSED OPENING

- NOTES:
- DO NOT SCALE DRAWINGS. IF THERE ARE QUESTIONS, IT SHALL BE THE CONTRACTOR'S RESPONSIBILITY TO ACQUIRE CLARIFICATION FROM THE ARCHITECT PRIOR TO COMMENCEMENT OF WORK.
 - FIELD VERIFY INTERIOR AND EXTERIOR DIMENSIONS. EXISTING CONDITIONS ARE BASED OFF OF EXISTING DRAWINGS.
 - FOR GENERAL NOTES AND ARCHITECTURAL LEGEND, REFER TO SHEET AN-01.
 - DO NOT RUN A/C DURING DEMO OR PAINTING.
 - SEAL ALL VENTS DURING DEMO AND REMOVE AFTER PAINTING.
 - SEAL ALL GROUT JOINTS IN CERAMIC TILE.
 - ENSURE TILE AROUND WATER CLOSETS ARE LEVELED.
 - FOR WINDOW AND DOOR SCHEDULES SEE SHEET A-09.
 - FOR DETAILS SEE SHEET A-08.
 - CLEAN OFF TOPS OF CABINETS BEFORE THE END OF THE PROJECT.



1A NEW FLOOR PLAN
 SCALE: 1/4" = 1'

ITEM NO.	REVISION	
	DESCRIPTION OF CHANGE	APPROVAL DATE

SHEET NUMBER:
A-01
 PROJECT:
 LEP: 1036-73