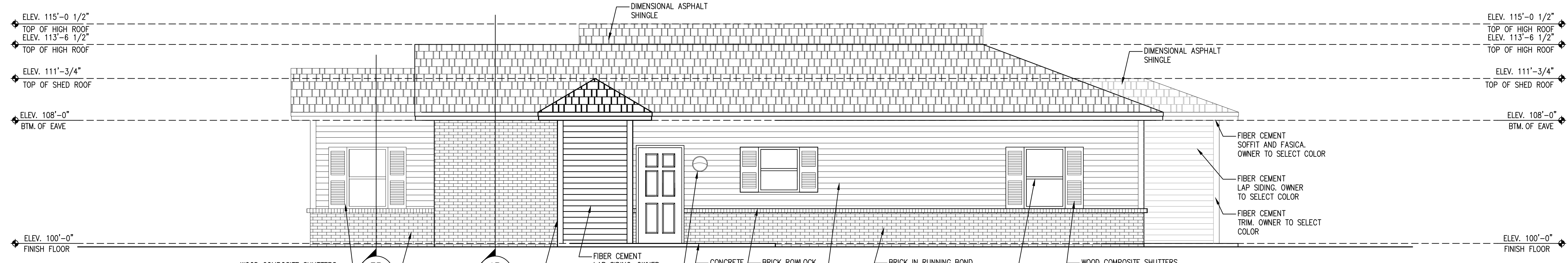
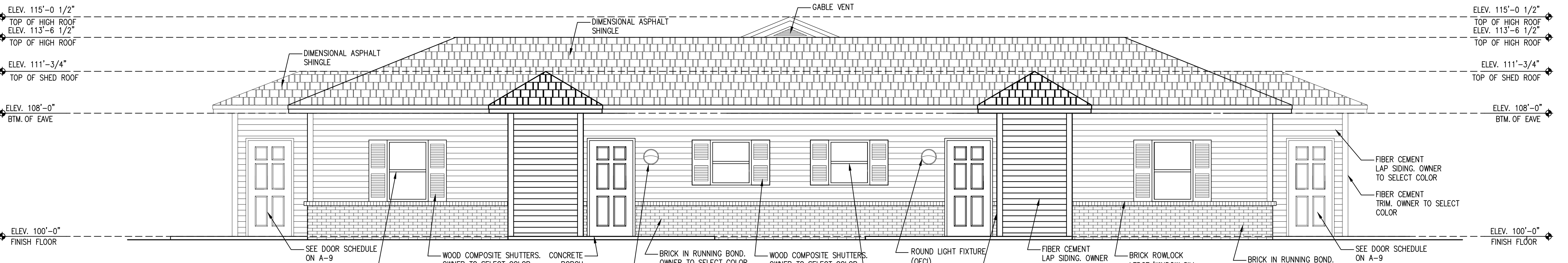


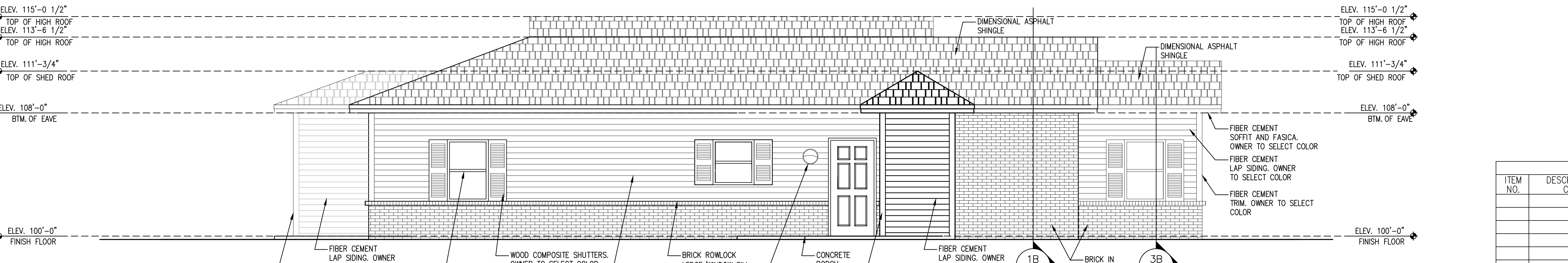
1D EAST ELEVATION
 SCALE: 1/4" = 1'-0"



1C NORTH ELEVATION
 SCALE: 1/4" = 1'-0"



1B WEST ELEVATION
 SCALE: 1/4" = 1'-0"



1A SOUTH ELEVATION
 SCALE: 1/4" = 1'-0"

REVISION		
ITEM NO.	DESCRIPTION OF CHANGE	APPROVAL DATE